

T7 TIMER

1. GENERAL

- Multi purpose waterproof timer that runs from AC power. Many behaviors to suit many different applications. Loud buzzer and bright light.

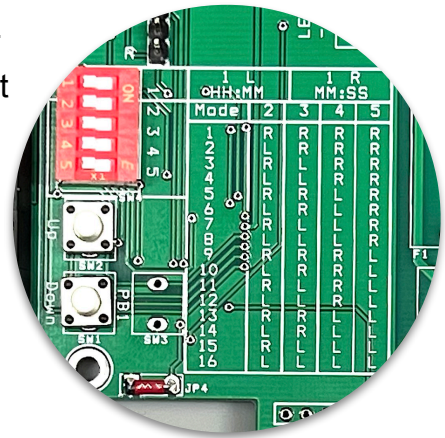
2. SETUP

- Press the front (green) button to start a countdown cycle. Notice that there is an “early warning” a few seconds before the end when the buzzer sounds.
- Change the minutes setting by using the blue buttons on the side.
- To change the seconds, *hold* the green button, and *then* the blue buttons can be immediately adjusted. (*while continuing to hold the green button*)
- If equipped with a 3-element stack light, the “early warning” time is shown on the yellow stack LED. The early warning time can be changed by holding the front (green) button for 2 seconds or more. Then the early warning can be adjusted in the same way as the countdown time. After the early warning time is set, release the buttons. After 3 seconds the display will blink to signal that the new early warning time is saved..



3. DIFFERENT BEHAVIORS

- There are many behaviors that can be selected using the red DIP switches. Each mode is best understood by referring to the “mode charts” on our web page that details the inputs and outputs for each mode.
- Switch #1 is only for selecting HH:MM or MM:SS.
- Switches 2-5 determine the behaviors in the chart below:



MODE	SWITCH POSITION					DESCRIPTION
	1	2	3	4	5	
1	L / R	R	R	R	R	MANUAL STOP - EARLY WARNING ON LED1
2	L / R	L	R	R	R	MANUAL STOP - CANNOT CANCEL
3	L / R	R	L	R	R	FUTURE USE
4	L / R	L	L	R	R	FUTURE USE
5	L / R	R	R	L	R	AUTOMATIC STOP - WITH CANCEL
6	L / R	L	R	L	R	MANUAL STOP - EARLY WARNING ON LED2
7	L / R	R	L	L	R	FUTURE USE
8	L / R	L	L	L	R	FUTURE USE
9	L / R	R	R	R	L	FUTURE USE
10	L / R	L	R	R	L	FUTURE USE
11	L / R	R	L	R	L	REPEATING
12	L / R	L	L	R	L	RINSE TANK FLUSH
13	L / R	R	R	L	L	RINSE TANK FLUSH, RELAY OFF DURING CD
14	L / R	L	R	L	L	ANDON - PAUSING-RUNTIME
15	L / R	R	L	L	L	LOCKOUT
16	L / R	L	L	L	L	FUTURE USE

SUMMARY OF MODES - COMPLETE DETAILS ON WEB PAGE

4. OTHER POINTS

- If counting in HH:MM, dots will chase along the bottom of the display to let you know that its timing. When the time counts continues lower than 99 minutes, it converts to MM:SS for the remainder of the countdown.
- If using the relay output, it supports a 15A resistive load. (so inductive loads like motors must be less than 15A) Relay can be N.O. or N.C by landing your wires on the appropriate terminals.
- The time can also be adjusted using the white buttons inside the enclosure.
- Modes 1 and 6 can count up from zero. They can also provide a brief buzzer and then warning LED after the programmed “early warning” time.
- The timer enclosures are waterproof and are comfortable being hosed down. HOWEVER, the electrical plug is just a standard plug and is *not* waterproof.
- When first powered on, the display will indicate the firmware revision, followed by the mode that the timer is in.